

AL-MX

Product Manual

English

Instructions

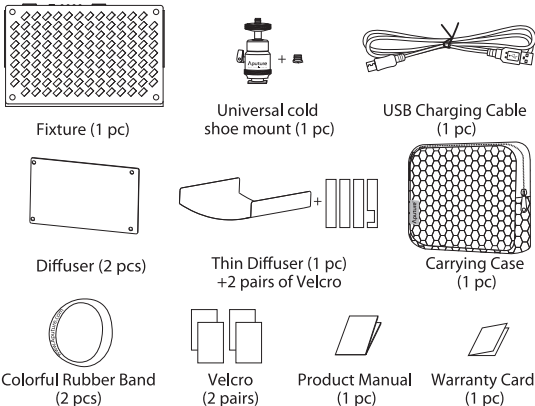
- For safety, please do not leave the product in excessive heat or expose to moist conditions.

⚠

**WARNING:** Avoid storing the fixture where there are corrosive chemicals.
- Please have the product checked by an authorized service or agent if your product has a problem. Disassembling this unit will void all warranties.
- The product is certificated by RoHS and CE. Please operate the product in full compliance with the operation standards. Please note that this warranty does not apply to repairs arising from malfunction, although you may request such repairs.
- The instructions and information in this manual are based on thorough, controlled company testing procedures. Product design is subject to change without notice.

Packing list

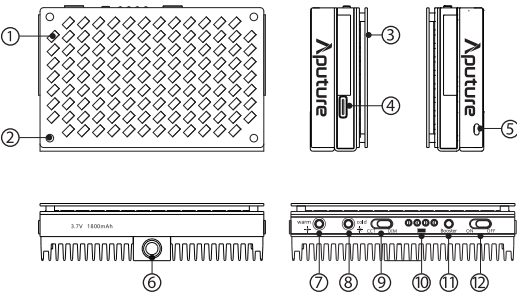
Package includes the following items:



-1-

Nomenclature

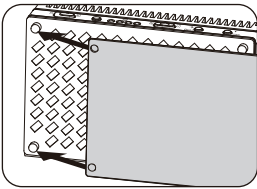
Fixture



- ① LED beads
- ② Special screw
- ③ Diffuser
- ④ USB Type-C charging port
- ⑤ Hanging hole
- ⑥ 1/4 fixed screw hole
- ⑦ CCT warm/brightness "-" button
- ⑧ CCT cold/brightness "+" button
- ⑨ CCT/Brightness switch
- ⑩ Battery indicator
- ⑪ Booster button
- ⑫ Power switch

Installation

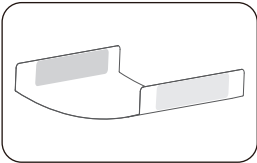
1. Install the diffuser on the fixture.



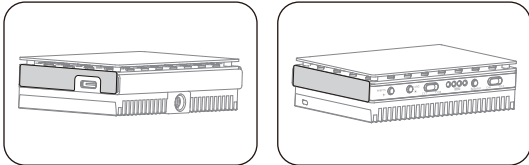
-2-

2. Install the thin diffusion.

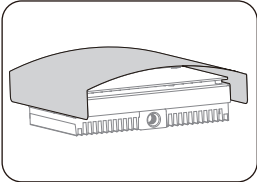
- 1). Stick 2 red velcros to both side of the thin diffusion.



- 2). Stick 2 black velcros to both side of the fixture.

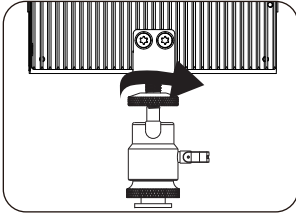


- 3). Stick the thin diffusion to the fixture.



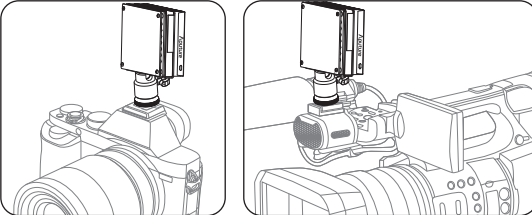
-3-

3. Place the fixture on the universal cold shoe mount, then screw clockwise.

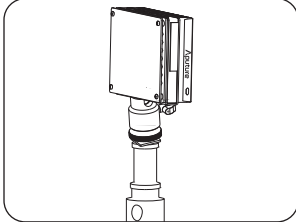


4. Diagram

- 1). Install the fixture onto the cold shoe.



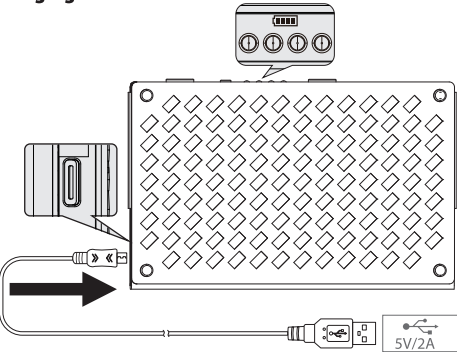
- 2). Use the thumbscrew to install the lamp with 1/4 screw into light stand's screw mount.



-4-

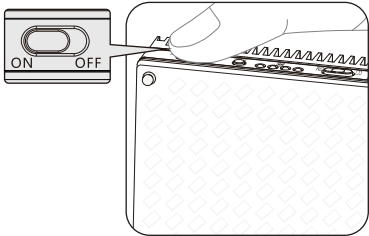
Operations

1. Charging



- \* While charging, the blue LED indicator will blink to its corresponding capacity. 4 continuous lights means a full charge.
- \* A single blinking light indicates <10% capacity remaining.
- \* The MX can charge while in use when brightness is below 40%.
- \* The light will turn off in conditions higher than 45°C. The second indicator will blink in these conditions.
- \* Please use 5V/2A charger or power bank for charging, otherwise(use 5V/1A) the brightness will be reduced or cause power protection.

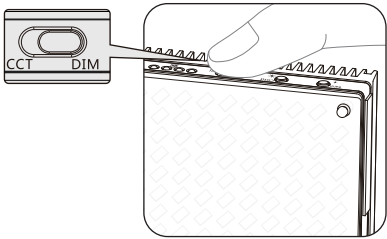
2. Power ON/OFF



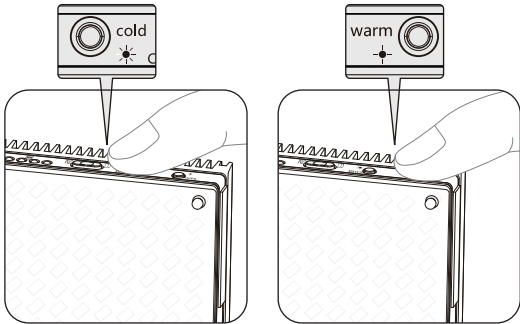
-5-

3. Adjust the Brightness

- 1). Switch the button to "DIM"



- 2). Short press and to change the brightness

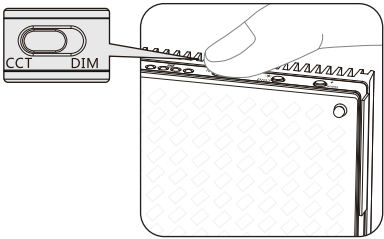


- \* Adjustable brightness steps: 20%、40%、60%、80%、100%.
- \* The brightness will turn down to 20% or 40% step when using 5V/0.5A, 5V/1A charger.

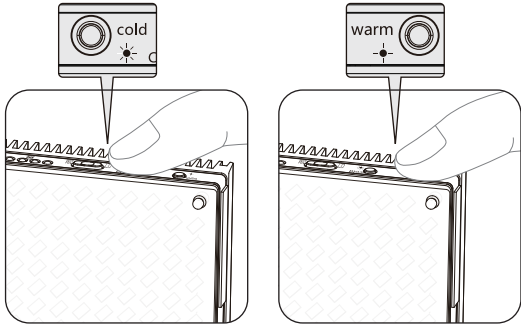
-6-

4. Adjust the Color temperature

- 1). Switch the button to "CCT"



- 2). Short press warm and cold to change the CCT

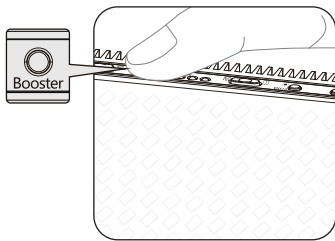


- \* Adjustable CCT range: 2800K、4300K、5000K、5500K、6500K.

-7-

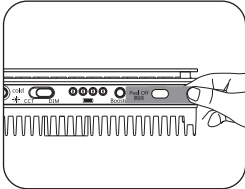
5. Booster mode

- 1). Short press Booster button to trigger booster mode.
- 2). Short press Booster button again to shut down the booster mode.
- 3). Booster mode lasts for 60 seconds and can be used again after 40 seconds.
- 4). The lamp will not have booster mode if plugged into a charger.
- 5). In the booster mode, the brightness will be risen 30% of the original maximum, in order to implement one key brightness booster.



- \* Use charge via USB Type-C for power supply, not able to trigger booster mode.
- \* When the battery temperature is high, not able to trigger booster mode.

- \* Please peel off the sticker on the fixture before using.



-8-

Specifications

Color Temperature		2800-6500K		
CRI		> 95		
TLCI		> 95		
Illuminance	Distance	0.3 m	0.5 m	1 m
	Brightness	≥2400LUX	≥880LUX	≥200LUX
Number of LEDs		128		
Battery Type		Lithium-polymer battery(3.7V 1800mAh)		
Rated Power		8W		
Battery Working Time		> 0.5h （maximum brightness）		
		> 4h （minimum brightness）		
Dimension		93.3*59.8*23.5 mm		

-9-